



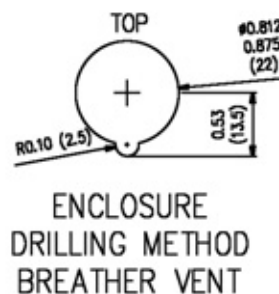
Stahlin enclosures are created in standard forms and shapes, but the ability to customize into unique end user configurations may be the single best reason to buy Stahlin products. Certain accessories are available by part number and can be added at the time of the enclosure purchase, or added later as a separate item.

By comparison, modifications are considerably more complex and end user specific and they must be implemented before the enclosure leaves the factory. All items listed as **Accessories** are available as separately priced items. These services designated factory install **Modifications** must be requested at the time of order placement.

Stahlin's non-metallic Breather Vent allows an enclosure to “breathe” — literally allowing the free passage of air while maintaining UL Type 4X enclosure integrity as a recognized component.



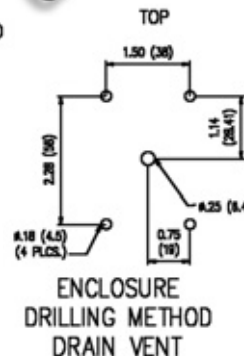
<b>Breather Vent</b>
<b>CATALOG NUMBER</b>
BV4XKIT



Stahlin's new non-metallic Drain Vent reliably protects electrical equipment housed inside an enclosure by properly draining unwanted moisture or accumulated water from within, while maintaining UL Type 4X enclosure integrity as a recognized component.



<b><i>Drain Vent</i></b>
<b>CATALOG NUMBER</b>
DV4XKIT



## General Accessories

### PVC Coated Hubs for use with PVC Coated Rigid Conduit

For connections using rigid PVC coated conduit, Plasti-Bond Red hubs are available in four standard sizes.



#### Plasti-Bond Red Hubs

CATALOG NUMBER	SIZE
STPRSTG2	3/4"
STPRSTG3	1"
STPRSTG4	1 1/4"
STPRSTG5	1 1/2"

### Copper Free Aluminum Hubs for use with Metallic Conduit

Metallic conduit connections can be made with the use of an aluminum hub available in seven standard sizes.

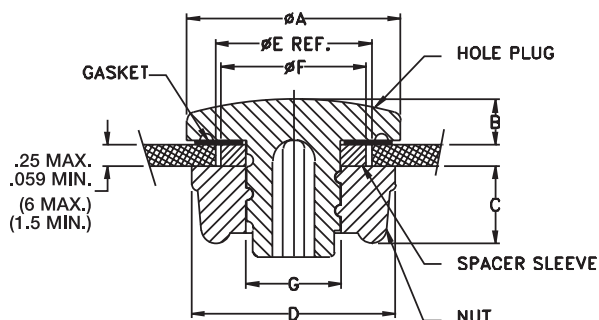


#### Aluminum Hubs

CATALOG NUMBER	INSIDE DIAMETER	HOLE DIAMETER
M50	1/2"	7/8"
M75	3/4"	1 1/16"
M100	1"	1 1/4"
M125	1 1/4"	1 11/16"
M150	1 1/2"	1 7/8"
M200	2"	2 3/8"
M250	2 1/2"	2 7/8"
M300	3"	3 7/16"
M400	4"	4 3/8"

## Pluggit!

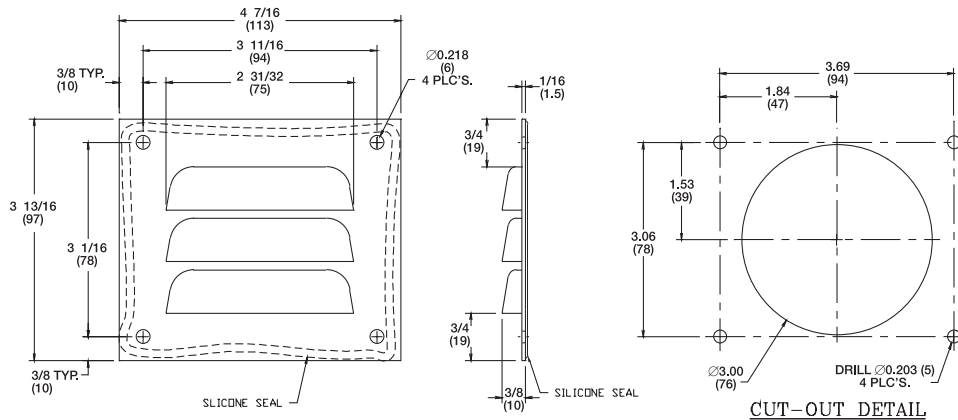
- Superior corrosion resistance compared to rust-prone carbon steel and other metallic alternatives helps ensure increased enclosure life expectancy.
- Cost effective when compared to either carbon or stainless steel alternatives.
- Considerably better long-term resistance to UV degradation versus UV-susceptible soft rubber plugs that turn brittle from extreme temperature variations and repeated UV exposure.
- Will not create galvanic corrosion associated with dissimilar metals sometimes used in electrical enclosures.
- Maintains all chemical resistance features of current Stahlin products.
- Flame retardant material to UL 94V-0.
- A submersion/hosedown rated component for use in electrical enclosures UL recognized to type 4X and 6P.
- IEC tested to IP66 and IP68.



#### Pluggit!

Kit Number	Config.	OA	B +0.05" -0.00"	C	D Across Flats	OE Ref. - Nom. Hole Dia. Range	OF	OG	Common Industry Applications
HPSERIES 1	HP1					0.50" - 0.56" (12.70 - 14.29)	N/A		1/2" Dia. Hole
	HP2	1.00" (25.40)	0.22" (5.59)	0.35" (8.89)	0.88" (22.35)	0.63" - 0.69" (16.00 - 17.46)	0.56" (14.22)	0.44" (11.18)	5/8" Dia. Hole
	HP3					0.75" - 0.81" (19.05 - 20.64)	0.68" (17.27)		3/4" Dia. Hole
HPSERIES 1.5	HP3.5	1.20" (30.48)	0.22" (5.59)	0.33" (8.38)	1.04" (26.39)	0.88" (22.35)	N/A	0.81" (20.57)	1/2" Conduit
	HP4					0.88" - 1.00" (22.35 - 25.40)	N/A		1/2" Conduit 22mm PB
	HP5	1.50" (38.10)	0.22" (5.59)	0.38" (9.63)	1.38" (35.05)	1.06" - 1.12" (26.92 - 28.45)	1.03" (26.16)	0.85" (21.59)	3/4" Conduit
HPSERIES 2	HP6					1.22" - 1.28" (30.73 - 32.51)	1.19" (30.22)		30mm PB
	HP7					1.38" - 1.50" (35.05 - 38.10)	N/A		1" Conduit
	HP8	2.00" (50.80)	0.22" (5.59)	0.38" (9.63)	1.88" (47.75)	1.69" - 1.75" (42.67 - 44.45)	1.65" (41.91)	1.35" (34.29)	1-1/4" Conduit
HPSERIES 3	HP9					2.00" - 2.12" (50.80 - 53.85)	N/A		1-1/2" Conduit
	HP10	2.75" (69.85)	0.22" (5.59)	0.41" (10.41)	2.63" (66.67)	2.50" - 2.56" (63.50 - 65.09)	2.44" (61.89)	1.97" (50.04)	2" Conduit
HPSERIES 4	HP11	3.38" (85.85)	0.22" (5.59)	0.34" (8.63)	3.38" (85.85)	3.00" (76.20)	N/A	2.97" (75.44)	2-1/2" Conduit
	HP12	4.00" (101.60)	0.22" (5.59)	0.34" (8.63)	4.00" (101.60)	3.62" (91.95)	N/A	3.59" (91.19)	3" Conduit
	HP13	4.50" (114.30)	0.22" (5.59)	0.38" (9.63)	4.50" (114.30)	4.12" (104.65)	N/A	4.09" (103.88)	3-1/2" Conduit
HPSERIES 5	HP14	5.00" (127.00)	0.22" (5.59)	0.41" (10.41)	5.00" (127.00)	4.62" (117.35)	N/A	4.59" (116.58)	4" Conduit

## Louver Plate Vent



### Louver Plate Vent

#### CATALOG NUMBER

LP1

LPK3KIT

Note: Kit includes LP1 plus silicone pack and four rivets



## Drain & Vent



### Drain & Vent

#### CATALOG NUMBER

DV1PVC

DVK3KIT

Note: Kit includes DV1PVC and silicone packet

## Encapsulated Screws



### Encapsulated

#### CATALOG NUMBER

2PKENCAP

4PKENCAP

## Stainless Steel Screws



### Stainless Steel Cover Screws

CATALOG NUMBER	SERIES	TYPE
2PKSS*	J	Cover
4PKSS*	J	Cover
4PKSSCF*	CF	Cover
2PKSSCL*	CL	Cover
4PKBPSS**	DS, J, CL	Back Panel
4PKBPN1610**	N	Back Panel
4PKBPN**	N	Back Panel
6PKBPN**	N	Back Panel
8PKBPN**	N	Back Panel

Note: \* includes cover screws and "O" rings.

\*\* includes back panel screws and washers.

## General Accessories

### Vapor Capsule



Stahlin Vapor Capsules contain a unique vapor phase inhibitor designed to protect metallic surfaces within an enclosure against airborne corrosion.

#### Louver Plate Vent

##### CATALOG NUMBER

VC21

Note: Radius of Protection: 2 ft.

Normal Life Span: 1 yr.

### Plastic Print Pocket



Stahlin's Print Pocket is self adhesive and can be utilized to store prints or other important documents within the enclosure.

#### Stainless Steel Cover Screws

CATALOG NUMBER	HEIGHT	WIDTH	DEPTH
PRTPKT	9.3"	10.4"	1.2"

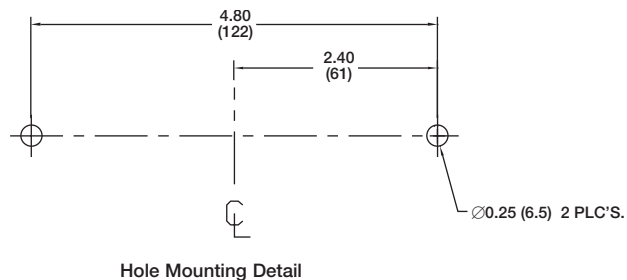
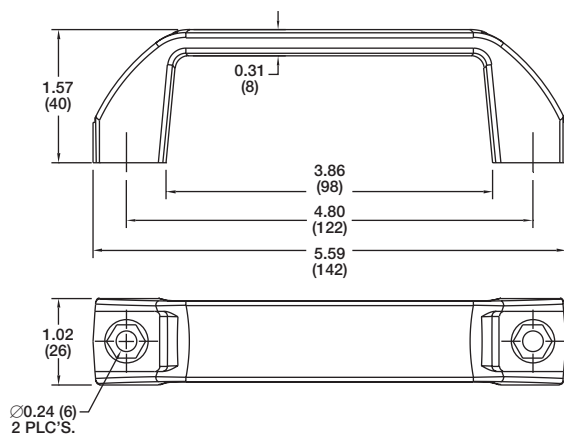
### Carrying Handle



#### Carrying Handle

##### CATALOG NUMBER

CH109506



## Nylon Cord Grip Fittings

Nylon cord grips are durable and easy to install. The body and sealing nut are manufactured with a tough, impact resistant nylon. Together the nut and washer form a positive sealing grip when installed through an enclosure wall. The oil resistant neoprene grommet and nylon washer fit tightly around an entrance cord, sealing out moisture, dust and foreign materials.

NEMA STD FBI-1983

UL STD 514 File No. 53599 Type 4

CSA STD 22.2 No. 18 File No. 28985 Type 4

HAZ LOC NEC 501-4(b), 502-4(a)(2), 503-3(a)

Class I, Div 2, Class II Div 1 and 2; Class III Div 1 and 2



### Nylon Cord Grip

CATALOG NUMBER	HUB DIAMETER	CABLE DIAMETER RANGE	INSIDE BODY DIAMETER
5122	1/2"	.250-.312	.625
5123	1/2"	.312-.375	.625
5124	1/2"	.375-.437	.625
5125	1/2"	.437-.500	.625
5126*	1/2"	.500-.562	.625
5146	3/4"	.562-.625	.788

\*Cable jacket may have to be stripped for clearance

### Nominal O.D.

SIZE	TYPE	2 COND	3 COND	4 COND
18	SV-SVT	.24	.25	.26
	SJ-SJO	.31	.34	.36
	S-SO	.39	.41	.44
	SJTO	.30	.33	.36
	STO	.38	.39	.42
16	SJ-SJO	.33	.36	.39
	S-SO	.41	.43	.49
	SJTO	.32	.35	.39
	STO	.39	.42	.47
14	SJO	.43	.47	
	S-SO	.53	.56	.61
	STO	.52	.55	.59
	BDC			.40
12	S-SO	.61	.64	.67
	STO	.59	.63	.67
	BDC			.45
10	S-SO	.64	.69	.75
	STO	.64	.68	.74
	BDC			.50
8	S-SO	.79	.90	.97
	STO	.81	.85	.96
	BDC			.68
6	S-SO	.91	.99	1.07
	STO	.95	1.00	
	BDC			.80
4	S-SO	1.09	1.15	1.29
	STO	1.10	1.15	1.30
	BDC			.94
2	STO	1.29	1.34	
	BDC			1.08

Dimensional data is taken from various cable manufacturers. It is not guaranteed but usable for general purposes.